



**IAMTech**  
EXPERIENCE NOT THEORY.

# iPlanMAINTAIN

Avoid failure when planning and  
executing your plant  
maintenance

[iamtech.com](http://iamtech.com)





# iPlan**MAINTAIN**

Industry specific software perfected  
delivering 45 million hrs+ of  
maintenance work orders (Apr 2020)

iPlanMAINTAIN digitises the management of routine maintenance with a proven industry workflow, developed over ten years in conjunction with multiple oil & gas super majors.

A wealth of features allow you to both plan your routine maintenance in detail and then execute it effectively.

We have perfected these features for 10 years facilitating the software's usage across multiple customers, with multiple site locations.

iPlanMAINTAIN is simple to use and allows you to scope, plan, estimate, logic link, sign approve, schedule, capture progress, time recording, scaffold inspections, and track key performance indicators (KPIs) on your personal dashboard.

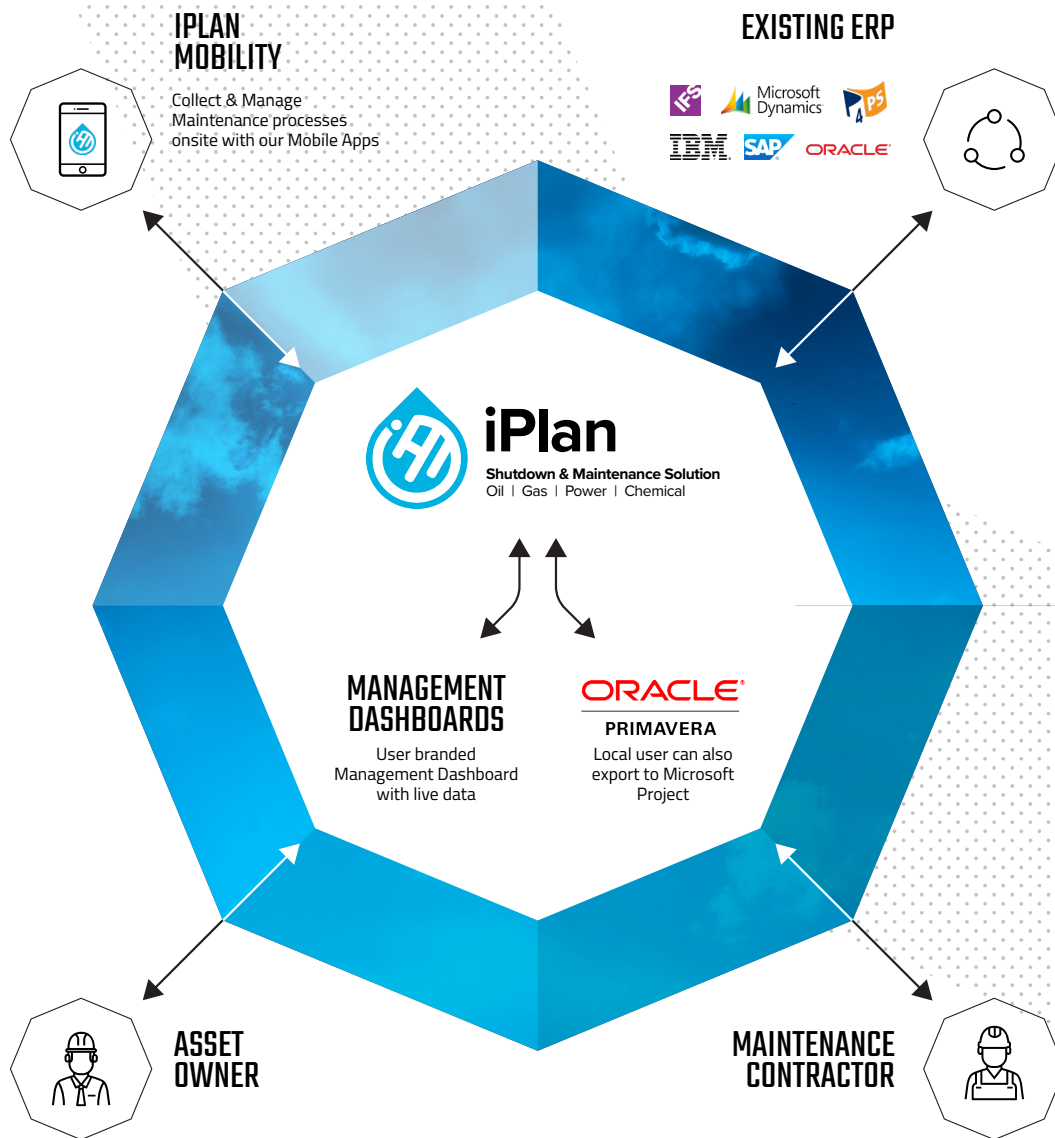
With everyone involved in your maintenance using the same piece of software, you standardise your maintenance methodology, ensuring all personnel involved in your plant's maintenance process are scoping, planning, estimating, & delivering maintenance the same way!

The best part is you can save 8/10 of the cost of planning a work order next time for equipment you have previously serviced.



Only **£6.25k** p/mth

- ✓ Unlimited users
- ✓ 24/7 - 365 Support
- ✓ Free 3rd party access
- ✓ Free upgrades
- ✓ Multisite licence discount



iPlanMAINTAIN users can log in and check productivity and expenditure in real time using an extensive range of reports and management dashboards. The dashboards are designed to help users understand, immediately, where they are with both the planning and the execution of maintenance orders.





# MAINTAIN Benefits & Features

**1: Manage all Maintenance key stages** from one system, including job scoping, job stepping, logic linking, estimation management, materials ordering, variation control, progress capture, time recording, scaffold inspection and close out notes.

**2: Equipment history** linked both to the job record and plant equipment is retained to be re-utilised repeatedly. Instantly, users can view and understand all historical works, allowing them to easily re-plan events that have previously been managed using MAINTAIN.

**3: Increase Safety & Productivity** through greater site supervision. The iPlanMOBILE app enables supervisors to report without leaving site.

**4: Complement existing systems** - Interface with systems like SAP, Maximo, IFS, Dynamics, Oracle and 4PS to receive work order details. From this point on your personnel no longer have to interface with your ERP - iPlan can update work order status in your ERP, automating your work order management.

**5: Schedules of rates** within iPlanMAINTAIN help maintenance teams to boost productivity and save money with a host of incredible benefits, including fine tuning norms and schedules of rates to enable rapid estimation.

**6: A full revision history and audit trail** ensure every change made is logged in a comprehensive revision history, preventing a blame culture and allowing full insight over the entire project.

## **7: Electronically managed scope and estimate**

**approvals** allow order estimates and bill of materials to be peer reviewed and electronically approved within the software, eradicating unapproved work.

**8: Reuse historical records and work packs** to save time on re-planning. Work pack PDFs are stored in a secure library with complete revision control and change history. Store any ancillary materials within a given event, such as drawings, photographs, and documentation.

**9: Email notifications** - Users can receive email notifications for key actions, such as approving a cost estimate to help drive the workflow and bring huge productivity improvement.

**10: Export your schedule details** from iPlan into your scheduling software such as Primavera and Microsoft Project. These can include any information held in iPlan, typically work order, activity, duration and dependency details.

**11: Build your weekly, forward look ahead schedule** establishing what each individual person will be doing on your plant & equipment.

**12: Transparent pricing** - Our software is priced lower than our competitors and we also state our price on our website for full transparency.

**13: Geolocate operations / activities** to know where work took place, if the person(s) went to the job, understand work patterns and export data for thematic mapping of location data to visually ascertain hotspots.

**14: iPlan's mobile app** allows you to capture scope when planning your maintenance work orders, even without internet, and allow live progress capture, man hour tracking, costs, location and scaffold inspection.

**15: Measure the productivity ratio** of all personnel delivering your maintenance work order, broken down by trade and resource. Only once you know your productivity, can you begin to improve it.

**16: Norms allow accurate estimation** of the duration of maintenance activities, without having to be a plant engineer or experienced planner. Estimates are based on the same baseline data for activity duration meaning you can compare one job to another with confidence

**17: Scaffold Management and Inspection:**  
iPlanMAINTAIN enables you to inspect and manage scaffold equipment and structure safety, sharing data in real-time with any user.

**18: iPlan automatically aligns** to the majority of organisations existing Maintenance methodology and can be localised to your maintenance glossary.

**19: Materials Management** in iPlan helps build your material take off while planning your activities & work orders; and can help with your purchase requisition. A dedicated materials management dashboard helps you understand where materials are, from initial request to being bagged and tagged for the job site.

**20: Management Dashboards** allow you in a single glance to understand event progress, risks, spend and productivity. This is designed to run on a tablet, PC, and to interact with on large touch screens in project management offices and conference rooms.

**21: No user limits** - so why licence per seat when you can licence all personnel involved in your plant maintenance, across your entire site, or your whole company. We don't limit the number of users who can access the software, enabling you to have everyone work on your plant maintenance in the same system!

**22: The easy-to-use work pack generator** allows you to publish your activities as you require, creating templates by trade, plant area, or just one work pack design for all of next year's maintenance.

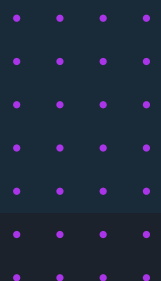
**23: Join a community** of global organisations that include Altrad, BP, INEOS, Interserve, Kaefer, Shell & many more. For over a decade we have learned from their best practice and incorporated this into iPlan so you can also benefit.

**24: Access to premium 24/7, year-round support** - call our friendly help desk, email us, or message our dedicated support team.

**25: Comprehensive iPlan training** - a Bronze, Silver, Gold graduation program is available to ensure maximum value from software adoption.

Want to see more?

Arrange a demo at [IAMTech.com](https://iamtech.com)



## Planning For Tomorrow Learning from Yesterday



Our software can retain all historical maintenance order data.

History linked both to the job record and plant equipment can be re-utilised repeatedly.

MAINTAIN users can view and understand all maintenance order history, which can be reused to plan new activity.

Unlike other Computerised Maintenance Management Software systems (CMMSSs), MAINTAIN includes a mobile app that increases your safety and productivity through increased supervision.

IAMTech has been part of industry for half a century, the value of this experience is vested and available in our software.





## Safety And Security First

Minimising safety and security risks is a must for any industrial organisation.

MAINTAIN reduces the risk of incorrect equipment or materials being wrongly allocated during a contract.

The software is accessed remotely via a secure cloud portal and data in-putted is held on secure servers. Our security measures used to access the software is the same as used by online banks ensuring that your data is safe and secure.

Asset owners and maintenance contractors both have access to the same information via MAINTAIN, which removes the need for contractors to have access to their client's IT domains whilst giving them all the information required to work effectively – one less IT headache.




## Understanding User Needs

### **MAINTAIN has been designed:**


Specifically for maintenance professionals within the Oil, Gas, Power, Mining and Chemical industries. Having delivered 45 million plus hours of maintenance work orders, we understand the needs of these job roles and have developed MAINTAIN to ensure the solution complements these individuals' roles and responsibilities.

MAINTAIN is designed to operate in both the office and on site. We understand the importance of MAINTAIN users being able to be on site and capture such things as progress, statuses, and quality assurance.



One of the UK's leading industrial providers received a quotation for an alternate solution. Instead, the customer chose MAINTAIN and saved over 62% of the original cost.

An industrial asset owner had an annual routine maintenance budget of £28m. By using iPlan it allowed the owner to save £2.78m in year 1 by, among other things, eradicating the need for outsourcing work pack generation to expensive third parties.



To find out more about  
iPlanMAINTAIN please contact our  
maintenance experts  
+44 (0) 1642 955350 or email  
[sales@iamtech.com](mailto:sales@iamtech.com)

L1-04 Fusion Hive, Northshore  
Innovation Centre, North Shore Road,  
Stockton On Tees, TS18 2NB, UK

[sales@iamtech.com](mailto:sales@iamtech.com)  
UK. 0800 012 6969  
Int. +44 1642 955350

[iamtech.com](http://iamtech.com)



**IAMTech**  
EXPERIENCE NOT THEORY

