



IAMTech
EXPERIENCE NOT THEORY.

iPermit2.0

**Integrated Control of Work.
Intelligent by Design.**

iPermit2.0 is a next-generation Integrated Safe System of Work (ISSoW) platform, designed to give organisations complete control over hazardous activities through structured digital governance.

Delivered as a secure, cloud-based SaaS solution – enabling asset owners, operators, and contractors to plan, authorise, coordinate, monitor, and audit all work activities, from routine maintenance to major shutdowns, within one fully integrated system.

Trusted by organisations in over 27 countries. More than a permit system – a scalable Control Framework platform that evolves with your organisation.

www.iamtech.com

By joining our worldwide community of users, you gain the benefit of shared innovation, proven experience, and continuous investment



Why use a software-based ISSoW system?

Imagine bringing every element of your safe system of work – permits, isolations, risk assessments, audits, and investigations – into one intelligent digital platform.

iPermit2.0 delivers exactly that, combining powerful automation with built-in safeguards and prompts to help protect your people, your plant, and your productivity. By joining our worldwide community of users, you gain the benefit of shared innovation, proven experience, and continuous investment – helping you simplify compliance, improve oversight, and strengthen your safety culture across every site.

THE REALITY OF PAPER-BASED PERMIT SYSTEMS

Paper-based permit systems were designed for simpler times. Today's industrial facilities face a very different operational reality – and paper processes simply cannot keep pace with the demands of modern high-hazard environments. The consequences are not theoretical.

THEY HAPPEN EVERY DAY

A CONTRACTOR STARTS WORK BEFORE THE ISOLATION IS CONFIRMED.

The permit was signed, but nobody verified that the isolation certificate was actually in place. With paper, there is no automatic link between the permit and the isolation – no interlock, no warning, no safeguard. The worker is exposed to live energy without knowing it.

TWO CONTRACTORS CREATE A SIMOPS CONFLICT THAT NOBODY CATCHES IN TIME.

A hot work permit is approved on the same section of pipe where a pressure test is already under way. Nobody has visibility of both permits simultaneously. The area authority only finds out when both crews arrive at the same equipment at the same time.

AN UNQUALIFIED WORKER IS ASSIGNED TO A SAFETY-CRITICAL TASK.

A permit is issued to an operative whose confined space certification expired six weeks ago. The supervisor signed off in good faith – but without a competency check embedded into the permit process, there was no way to know. The system allowed it. Your people's safety depended on a detail nobody caught.

A SHIFT HANDOVER LOSES CRITICAL SAFETY INFORMATION.

The outgoing permit holder briefs the incoming team verbally. Details about a partial isolation or suspended permit are misunderstood. Work resumes on equipment that is not safe. This is not negligence – it is an inevitable consequence of relying on word-of-mouth handover with paper-based records.

A REGULATOR ARRIVES AND ASKS FOR YOUR COMPLETE PERMIT HISTORY.

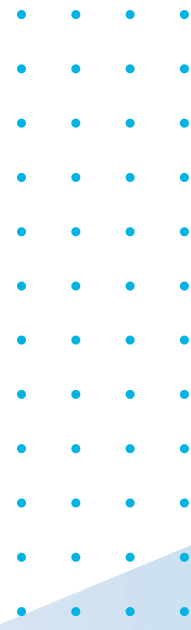
Your team spends three days searching through binders, filing cabinets, and site offices. Records are incomplete, illegible, or missing entirely. What should be a demonstration of your safety culture becomes a regulatory crisis – with potential enforcement action.

THESE ARE NOT HYPOTHETICAL RISKS.



They are the daily reality of organisations relying on paper-based or disconnected permit systems – and they are entirely preventable with iPermit2.0.

What changes when you choose iPermit2.0



iPermit2.0 does not simply digitise your paperwork. It transforms the way your organisation controls work – giving every person in the process the right information, at the right time, to make the right decision.

HERE IS WHAT YOUR OPERATIONS LOOK LIKE AFTER ADOPTION.

IMPROVE SAFETY & HAZARD CONTROL

iPermit2.0 systematically identifies hazards, applies the right control measures, and verifies competency before work begins. The system prevents incomplete or non-compliant permits from progressing – by design, not by instruction.



OUTCOME

Your supervisors will never unknowingly issue a permit against an unsafe isolation – the system will not allow it. Linked isolations must be confirmed before a permit activates and cannot be removed while work is live. Every major accident hazard control is documented, enforced, and auditable. The safeguard becomes structural, not dependent on individual vigilance.

SAVE TIME & SIMPLIFY WORKFLOWS

Automated approvals, smart routing, pre-built templates, and multi-channel notifications dramatically reduce the time from permit request to work start – without ever compromising safety or compliance.



OUTCOME

Your maintenance teams will stop waiting at the job site for a piece of paper to make its way around the site office.

A permit that previously took two hours can be issued in minutes.

Across a site with hundreds of active permits, this compounds into measurable reductions in downtime, schedule overruns, and contractor standing time – delivering real, calculable ROI.

STRENGTHEN COMPLIANCE & OVERSIGHT

Every action is logged, timestamped, and attributed. iPermit2.0 creates a live, auditable record of all work control decisions – across every site, every team, and every permit. International regulatory standards are embedded into everyday workflow.



OUTCOME

When a regulator arrives – with or without notice – your team will have the complete permit history available in seconds, not days. Every approval, modification, and closure is recorded and searchable. Your audit is no longer a crisis to manage – it is a demonstration of your safety culture.

Audit readiness becomes continuous, not reactive.



REAL-TIME MONITORING & CONTROL

Configurable dashboards provide live visibility of all active work, approvals, permit status, isolations, and exceptions across your entire operation – from a single screen, on any device, from any location.



OUTCOME

Your operations manager will know – right now – how many permits are live, which are approaching expiry, where conflicts have been flagged, and which approvals are delayed. No phone calls.

No site walks to find out what is happening. Complete operational awareness, from one screen, in real time.

REDUCE COSTS & ELIMINATE DELAYS

Digital workflows remove the admin burden and direct cost of paper-based systems – including printing, storage, retrieval, and error correction. The annual licence fee for iPermit2.0 can be directly offset against the tangible cost of paper-based alternatives.



OUTCOME

Your organisation will eliminate annual spend on paper permit books, reduce per-permit administration time, and recover productive hours previously lost to approval bottlenecks, rework, and searching for paperwork. Savings are measurable from day one – and they compound across every site and every shift.

IN-BUILT DIGITAL SAFEGUARDS

System interlocks prevent out-of-sequence actions. Safety gates, competency verification, and approval logic ensure all mandatory checks are always completed – regardless of workload pressure or individual behaviour.



OUTCOME

Your teams will no longer rely solely on individual vigilance to prevent process failures. The system enforces the sequence: no permit without a validated risk assessment, no isolation removal while a permit is live, no safety-critical task assigned to an unqualified operative. The protection is embedded in the process – not dependent on someone remembering to check.



Every approval, modification, and closure is recorded and searchable. Your audit is no longer a crisis to manage – it is a demonstration of your safety culture.

iPermit2.0

KEY PRODUCT FEATURES

Built for the realities of high-risk working environments, iPermit2.0 includes everything you need to manage permits, isolations, risk assessments, audits, and incident investigations — all within one intelligent, connected system. All modules are included as standard in one fixed annual licence fee.

CORE CONTROL OF WORK MODULES

RISK ASSESSMENT (JSA / HIRA)

Step-by-step task breakdown with hazard identification per step, likelihood and severity scoring, control measure definition, residual risk validation, and dynamic linkage to live permit authorisation. Risk assessments are not static documents stored in folders — they are live, connected components of work authorisation that cannot be bypassed.



OUTCOME

Work cannot proceed without a documented, validated hazard control. Your operatives and supervisors are guided through structured hazard thinking before touching any equipment. Risk assessments become references that evolve with the task — not paperwork completed after the fact to satisfy an audit requirement. The quality of pre-work hazard thinking improves measurably across your organisation.

SIMOPS & ANTI-CLASH DETECTION

Automatic detection of location overlaps, equipment conflicts, isolation conflicts, and time window clashes between simultaneous operations. Supervisors visualise all live work across the site using integrated map and plot plan views. iPermit2.0 can prohibit certain types of work from taking place adjacent to each other, and allows manual boundary creation around specific tasks to prevent conflicting works.



OUTCOME

Your area authorities will identify conflicting works before they escalate — not when two crews arrive at the same piece of equipment. A hot work permit adjacent to an ongoing pressure test. An isolation that conflicts with another team's energisation schedule. These conflicts are surfaced before permits are issued, giving your supervisors the power to intervene proactively — before the risk becomes an incident.

ISOLATION MANAGEMENT (LOTO)

Full digital control of Lockout/Tagout processes — including isolation certificates linked directly to permits, individual isolation point tracking, lock box and key safe management, cascading and cross-locking logic, isolation verification, and controlled de-isolation sequencing. All isolation actions are digitally recorded, eliminating reliance on paper logs and whiteboards.



OUTCOME

Your isolations will never be removed while a linked permit is still live. The system enforces the sequence automatically — by interlock, not by instruction. Energy control becomes transparent, governed, and permanently auditable. The most significant contributor to major incidents in industrial maintenance becomes structurally managed, not left to memory, custom, or goodwill.

PERMIT-TO-WORK (EPTW)

iPermit2.0 governs the complete lifecycle of every hazardous activity — from draft creation and multi-level role-based approval, through digital issue and live status monitoring, to shift handover, suspension, resumption, and structured closure. Every permit captures scope of work, location tagging, equipment references, hazard identification, linked isolations, required atmospheric tests, and digital signatures. The system prevents incomplete or non-compliant permits from progressing at any stage.



OUTCOME

Your permit office will issue correct, complete permits every time — because the system will not allow an incomplete one to proceed. Every approval, every modification, every closure is logged and permanently attributed. When a question arises about a permit weeks or years later, the full unbroken story is available in seconds.



Lost paperwork, illegible handwriting, and missing records become things of the past.

End-user features & extended capabilities



iPermit2.0 is designed with the end user in mind – deployed globally and used by a diverse range of operational and safety professionals. For organisations seeking broader governance, iPermit2.0 extends beyond core permit and isolation management into a fully integrated Control Framework, covering incident intelligence, competency assurance, audit management, and AI-assisted oversight.

GOVERNANCE, ASSURANCE & SAFETY INTELLIGENCE

AI ASSISTANT – CONTEXTUAL CHATBOT

A read-only assistant anchored to the permit record you are working on. Ask questions about the current permit, related work in the same area, or similar assessments your team has run before – “Any other hot-work permits live in Area B right now?”, “Have we isolated this line before?” – and it answers from your site’s own PTW data through a fixed set of permission-scoped tools. Every answer cites the source records it drew from. It cannot create, modify, sign, or transition any record, and questions outside your permit data are declined.



OUTCOME

Area authorities and permit writers get instant answers from live site data – without leaving the record, making a phone call, or relying on someone else’s memory.

INCIDENT & INVESTIGATION MANAGEMENT

Record, analyse, and resolve safety events directly in iPermit2.0. Incidents are linked to the permits, isolations, and risk assessments associated with the event – enabling true root cause analysis and end-to-end traceability across your entire Control Framework.



OUTCOME

When an incident occurs, you will have the complete work control picture in seconds – every permit, every isolation, every risk assessment linked to that job, on that day. Learning becomes structural. Your organisation improves with every event investigated properly, and repeat incidents become genuinely preventable.

AUDIT & INSPECTION MODULE

Digitally plan, perform, and log permit audits and site inspections. Each audit captures auditor details, timestamps, and findings – with full non-conformance tracking, corrective action workflows, and a complete digital audit trail.



OUTCOME

Your audit programme becomes continuous, not reactive. Live permit inspections are logged in real time. Non-conformances are tracked to closure. When an external audit occurs, your complete inspection history is immediately available – structured, searchable, and demonstrating a genuine culture of assurance rather than last-minute preparation.

[MORE](#)

COMPETENCY VERIFICATION SYSTEM

Automatically validate worker qualifications and authorisations before permits are issued. Certification expiry alerts and automatic role restrictions ensure only competent personnel perform safety-critical tasks – supporting regulatory compliance and workforce assurance.



OUTCOME

You will never unknowingly assign a safety-critical task to someone whose certification has lapsed.

The system checks at the point of permit issue – protecting your workers, your compliance record, and your regulatory standing without relying on a manual check that someone must remember to perform.

GAS TESTING & ATMOSPHERIC MONITORING

Configurable gas testing requirements covering O₂, LEL, H₂S, and CO – with time-bound validity enforcement, re-test triggers, and authorised gas tester role validation. If readings fall outside safe limits, the system flags and prevents permit issue automatically.



OUTCOME

No confined space entry or hot work permit will progress if atmospheric conditions have not been verified as safe. Test data is permanently embedded in the permit record.

The risk of atmospheric incidents caused by undocumented, time-expired, or missed gas tests is eliminated by design – not by hoping everyone remembers the procedure.

SANCTION FOR TEST

Structured workflow governing testing activities involving controlled energisation – including partial de-isolation sequencing, test approval, confirmation of test conditions, controlled restoration, and re-isolation validation. Testing is treated with the same governance as live operational work.



OUTCOME

Your engineers are guided step by step through the test verification sequence – reducing the potential for human error at the most critical moment of equipment recommissioning. Every test decision is recorded. Every authorisation is traceable. The risk of incidents during equipment return to service is managed by structure, not by memory.



PLATFORM, USABILITY & WORKFLOW FEATURES

DIGITAL SIGNATURES & PERMIT HANDOVER

Secure, traceable digital signatures provide a permanent record of all approvals, modifications, and shift handovers – giving full accountability at every stage of the workflow. Shift handovers are structured, documented, and complete.



OUTCOME

There is no ambiguity about who approved what, and when. Every signature is timestamped, attributable, and permanently stored. Disputes about permit authorisation are resolved with evidence, not recollection. And your incoming shift team inherits a complete, current picture of all live work – nothing falls through the cracks between shifts.

FASTER, SMARTER APPROVALS

Permit requests and authorisations are automatically routed to the right people via MS Teams, email, WhatsApp, or in-app notifications – from any device. Smart routing eliminates manual chasing and removes the approval bottlenecks that delay the start of work.



OUTCOME

Your contractors will stop waiting at the site gate. Your maintenance teams will stop sitting idle at the job site. Permits move through the approval chain automatically, and the right person is notified the moment their action is required. The hours previously lost to approval delays accumulate into meaningful productivity gains across every shift.

VISUAL WORK PLANNING BY LOCATION

Integrated plot plans and map functionality allow live activity to be viewed across multiple elevations and all assets simultaneously. Plan ahead, avoid congestion, identify high-risk zones, and coordinate teams spatially in real time.



OUTCOME

Your operations team will see exactly where every active permit is located without leaving the control room. Spatial congestion becomes visible before it becomes a coordination problem. Your area authorities plan their day with full situational awareness – not guesswork based on incomplete paper records.

USER ANALYTICS & REPORTING

Gain actionable insight into team performance, approval bottlenecks, permit cycle times, and safety metrics – helping managers make informed, proactive decisions across operations rather than reacting to problems after they develop.



OUTCOME

Your safety and operations managers will identify process bottlenecks, high-frequency problem areas, and performance trends before they become operational crises. Decisions are driven by data. Improvement is measurable. And the case for continued investment in safety culture is built on evidence, not assertion.

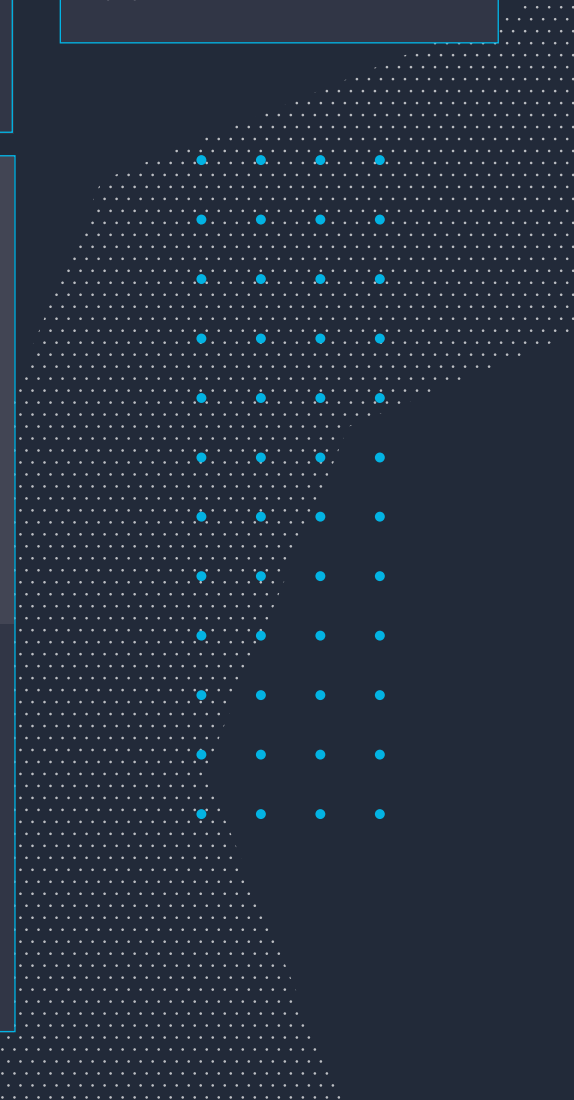
DATA TRACEABILITY & RETENTION

Every action is logged and retained indefinitely. From permit creation to closure, iPermit2.0 maintains a complete digital record – eliminating lost paperwork and ensuring an unbroken audit trail from the first approval to the final signature.



OUTCOME

When a question arises about work carried out five years ago – from a regulator, an insurer, or a legal enquiry – you will have the complete, searchable, unaltered record. No missing pages. No illegible handwriting. No gaps in the story. The record you need is the record you have.





Offline Capability

Field personnel on offshore platforms, remote sites, and areas with poor network coverage can access iPermit2.0 through the offline app.

The boundary between what is available offline and what requires connectivity is not a technical constraint – it is a safety principle: reading permit and isolation data cannot harm anyone; issuing, approving, or modifying a permit on an out-of-sync device can.



AVAILABLE OFFLINE

- ✓ **Read active permits** – View all permits in their current state – number, scope, responsible parties, associated isolations, status – from the last cached sync.
- ✓ **Read isolation certificates** – Review isolation schemes, isolation point listings, and lock box / key safe assignments.
- ✓ **View site map and plot plan** – Access the spatial view of active work locations and permit boundaries.
- ✓ **Review job details and work packs** – Read the job description, task steps, materials list, and risk assessment attached to a permit.
- ✓ **Access HSE documentation and reference material** – Site procedures, safe work method statements, and regulatory reference documents stored in the system library.
- ✓ **Review competency records (read-only)** – Check worker qualifications and certifications on file for the permit scope.



NOT AVAILABLE OFFLINE – BY DESIGN

- ✗ **Permit issuance, approval, suspension, or closure** – Any action that transitions a permit workflow state requires a live connection. An offline approval on a locally cached copy would create a conflict that cannot be resolved safely.
- ✗ **Isolation sign-off and de-isolation** – Confirming or removing an isolation must be synchronised immediately. The system cannot carry two versions of an isolation state.
- ✗ **SIMOPS and MOP0 conflict checks** – Conflict detection requires querying the full live permit picture. A cached query would miss permits issued after the last sync.
- ✗ **Competency verification at permit issue** – Must query the live record – an expired certification must show as expired, not as valid at the last cached state.



The iPermit2.0 offline capability is built on a single principle: reading the current state of the work is always safe; changing the state of the work without a live connection to the authoritative system is never safe. This is why offline availability maps directly to read-only access – not because of technical constraints, but because a permit system that can issue or approve work offline is not a safe system of work.

iPermit2.0 AI – What It Does, and What It Doesn't

Every iPermit2.0 AI feature operates on the same principle: the system generates output for a human to review, approve, or act on. Nothing is applied automatically. Nothing overrides the governance structure.



The AI accelerates decisions – it does not make them.

RISK ASSESSMENT CO-AUTHOR

When a permit requires a risk assessment, the AI RA Co-Author suggests hazard and control entries drawn from the site's own hazard library – the same library built up from previously approved risk assessments on that tenant. The permit writer reviews, edits, and approves each suggestion individually.



OUTCOME

Risk assessments are completed faster and consistently reference the full organisational hazard knowledge base – not just what the individual preparer happens to recall. The source is the site's own library, not generic AI training data.

SIMOPS CONFLICT EXPLAINER

When iPermit2.0's rule engine blocks a permit because of a SIMOPS or MOPO conflict, the AI Conflict Explainer generates a plain-English explanation of which conflicting permit or isolation is causing the block – referencing the live permit data directly.



OUTCOME

Area authorities resolve conflicts in the system rather than by phone call or whiteboard. The explanation references the actual conflicting permit – not a generic error message.

P&ID ISOLATION POINT EXTRACTION

When building an isolation scheme, the P&ID Extraction Assistant reads an uploaded P&ID drawing and identifies candidate isolation points – valves, blinds, spectacle plates, and electrical disconnects relevant to the defined work boundary. The isolation engineer reviews each suggested point, confirms or removes it, and builds the final scheme from the validated list.



OUTCOME

Isolation scheme development – currently a time-intensive manual process of reading P&ID drawings and identifying points individually – is accelerated without removing the engineer's review. Every isolation point in the final scheme has been individually confirmed by a competent person.

PERMIT REVIEW ASSISTANT

Before a permit is submitted for approval, the AI Permit Review Assistant scans the completed permit and flags potential issues: missing mandatory fields, inconsistencies between the stated work scope and the selected permit type, and control measures that appear absent given the hazards identified. Findings are presented in a three-tier system: Critical, Warning, and Advisory. Nothing is auto-corrected – the permit writer acts on each finding.



OUTCOME

Errors and omissions are caught before approval, not discovered during execution or post-incident investigation. The three-tier system means critical gaps are clearly distinguished from advisory observations.

SHIFT HANDOVER SUMMARY

At shift change, the AI Handover Assistant drafts a handover report from live system state: all active permits, suspended permits, expiring permits, active isolations, and flagged conflicts. The outgoing shift reviews, edits if needed, and approves before it is passed on.



OUTCOME

Shift handover – one of the highest-risk moments in any industrial operation – is grounded in the live system record, not verbal recall or a manually written note. The outgoing shift approves the summary before it is passed on. Nothing is auto-transmitted.

MORE BENEFITS

✓ EASY TO USE

Designed with the end user in mind. Built-in interactive tutorials and contextual on-screen guidance ensure rapid adoption – new users learn by doing, with support available at every step of the workflow.

✓ TRANSPARENT PRICING

Clear, predictable pricing with hosting, upgrades, and support included at no additional cost. All modules included as standard. One fixed annual licence – no hidden extras, no per-module fees, no surprises.

✓ RAPID DEPLOYMENT

iPermit2.0 can be fully deployed within weeks. A familiar, intuitive interface ensures quick team adoption without lengthy implementation programmes or complex consultancy engagements.

✓ DEVICE COMPATIBILITY

A fully web-based solution that works across all devices – desktop, tablet, and mobile. Users can request, review, approve, or sign permits directly from their phones, anywhere on site or in the field.

✓ REMOTE & MULTI-SITE MANAGEMENT

Access iPermit2.0 from anywhere. View and manage the status of all activity remotely – improving coordination, oversight, and governance across multiple locations and international time zones.

✓ SYSTEM INTEGRATION

iPermit2.0 integrates seamlessly with your existing business systems – Active Directory, HR platforms, maintenance management tools, and third-party applications via API. No data silos. No duplicate entry.

✓ SINGLE SIGN-ON (SSO)

SSO functionality streamlines access, enhances security, and reduces login fatigue. Administrative control over hierarchy structures, access rights, and notification settings ensures the platform evolves with your business.

✓ TEMPLATE LIBRARY

Save time with pre-approved templates for permits, isolations, and risk assessments. Reuse or clone previous permits for faster setup while maintaining consistency and compliance across teams and sites.

COMPLIANCE EMBEDDED BY DESIGN

iPermit2.0 is built to meet and exceed international regulatory standards. Organisations operating across multiple jurisdictions benefit from a single platform that embeds compliance requirements into everyday workflow – so audit readiness is continuous, not reactive.

- ▷ HSG250 & HSG253
- ▷ OSHA Lockout / Tagout
- ▷ API & IOGP Guidance
- ▷ OIAC
- ▷ APPEA
- ▷ NOGEP&A & NOROG
- ▷ AS/NZS Standards
- ▷ NEN / ISO Frameworks
- ▷ Cyber Essentials Certified



THE CHOICE FOR SOME OF THE BIGGEST NAMES IN INDUSTRY

iPermit2.0 is trusted by major industrial organisations across energy, mining, manufacturing, utilities, and infrastructure – including NEOM, Anglo American, Dominion Energy, Cargill, Network Rail, Air Products, Thermo Fisher Scientific, and many more.

Our ISSoW system not only enables our customers to develop a world-class safety culture, but also a sustainable future through the elimination of paper from the permit process – and all associated documents, risk assessments, and records. Digital, searchable, and permanently retained.

About IAMTech

Cleveland Process Designs, trading as IAMTech, has a rich history dating back to 1973. From our beginnings as industrial plant model makers, we have evolved over 50 years into a global frontrunner in the development of innovative industrial software – serving customers in 27 countries worldwide.

By joining our worldwide community of users, you gain the benefit of shared innovation, proven experience, and continuous investment – helping you simplify compliance, improve oversight, and strengthen your safety culture across every site.

We are constantly striving to enhance and develop our products. We don't believe in standing still.

“In our world, this is what excellence looks like! The success of our implementation is a result of excellent project management, a cooperative and committed team, collaboration, great technical experts, respect at all levels, and outstanding support.”

Tucker Energy Services, Trinidad and Tobago

“iPermit has been a transformative tool for Specialist Marine Consultants (SMC) Ltd since its implementation as part of an offshore wind project. The centralised platform has greatly reduced the administrative burden associated with permit management, allowing teams to allocate their time and resources more efficiently to critical tasks. Real-time monitoring and tracking capabilities have empowered SMC Ltd to maintain stringent safety standards throughout their offshore operations – providing instant access to vital information and ensuring compliance with regulatory requirements.”

Andrew Corrie, Head of Marine Operations, Specialist Marine Consultants (SMC) Ltd

MULTI AWARD WINNING SOFTWARE COMPANY

TEES TECH BUSINESS
LEADER OF THE YEAR
FINALIST 2024

NEPIC SME BUSINESS OF
THE YEAR **WINNER 2024**

PRESTIGE AWARDS –
INDUSTRIAL SOFTWARE OF
THE YEAR **WINNER 2024**

BUSINESS AWARDS UK –
TECH BUSINESS OF THE
YEAR **WINNER 2024**

BUSINESS AWARDS UK –
SME BUSINESS OF THE YEAR
FINALIST 2024

CEO / DIRECTOR OF THE
YEAR **WINNER 2024**

AI SOLUTION OF THE YEAR
FINALIST 2025 – LLOYDS
BUSINESS AWARDS

CYBER ESSENTIALS
CERTIFIED

THE CHOICE FOR SOME OF THE
BIGGEST NAMES IN INDUSTRY



BOOK A
DEMONSTRATION



To find out more about
iPermit2.0 please contact our
permit software experts today,
on tel: +44 (0) 1642 955350
or email: info@iamtech.com

1 Mill Wynd
Yarm, Cleveland
TS15 9AF
UK
Int. +44 1642 955350

www.iamtech.com

cyber vadis

